



ARIA RAILING SYSTEMS ESTIMATION GUIDE

PROJECT: _____



ENJOY YOUR VIEW WITH ARIA RAILING SYSTEMS

Whether your deck has a standard layout or something completely customized, we can help build an estimate for any project. We've made it easy for you to gather and submit all of your deck information to get your most accurate quote to keep your project moving.

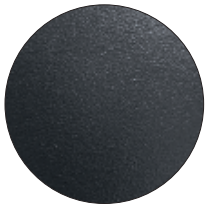
So let's get moving! Use this estimate planner to prepare your Aria Railing estimate submission. No matter what deck configuration you may have, we can get you an estimate for it.

HERE IS WHAT YOU WILL NEED TO DO:

1. Measure and write down your deck measurements. See Page 2 of this guide for assistance.
2. Draw/sketch your deck on the included grid paper worksheet.
3. Go to AriaRailing.com/estimate to enter your information and submit your estimate request.

YOU WILL ALSO NEED TO KNOW:

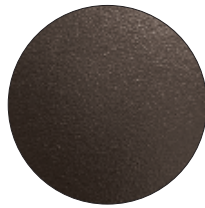
- Your color of choice:



BLACK



WHITE



BRONZE

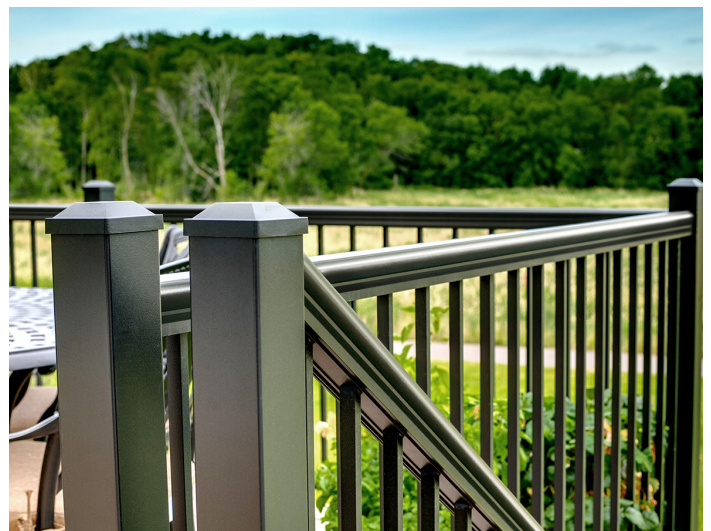


PIANO RAIL



TUXEDO RAIL

- Requestor Contact Information
- Type of deck surface the railing is attaching to



STEP 1

MEASURE

To provide you with an accurate quote for our railing, we will need you to measure your deck and stairs. Be sure to measure every length and document your measurements in feet and inches to the nearest inch. You will be providing these precise measurements to us.

| SECTION | FEET AND INCHES |
|---------------|-----------------|
| Deck Length A | |
| Deck Length B | |
| Deck Length C | |
| Deck Length D | |
| Deck Length E | |
| Deck Length F | |
| Deck Length G | |
| Deck Length H | |
| Deck Length I | |
| Deck Length J | |

| SECTION | FEET AND INCHES |
|----------------|-----------------|
| Stair Length A | |
| Stair Length B | |
| Stair Length C | |



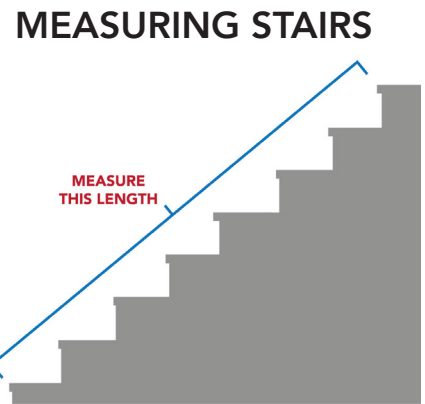
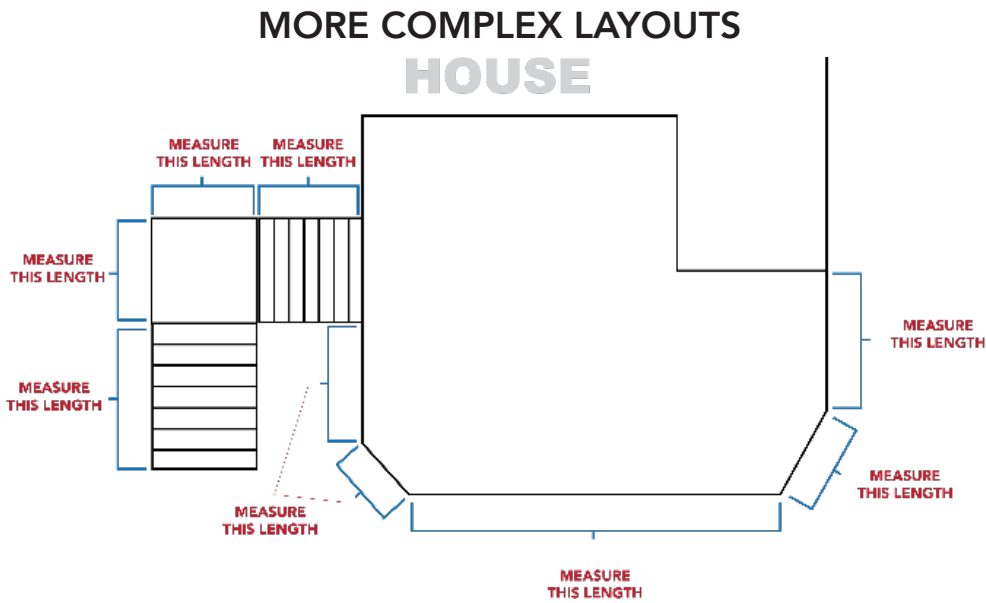
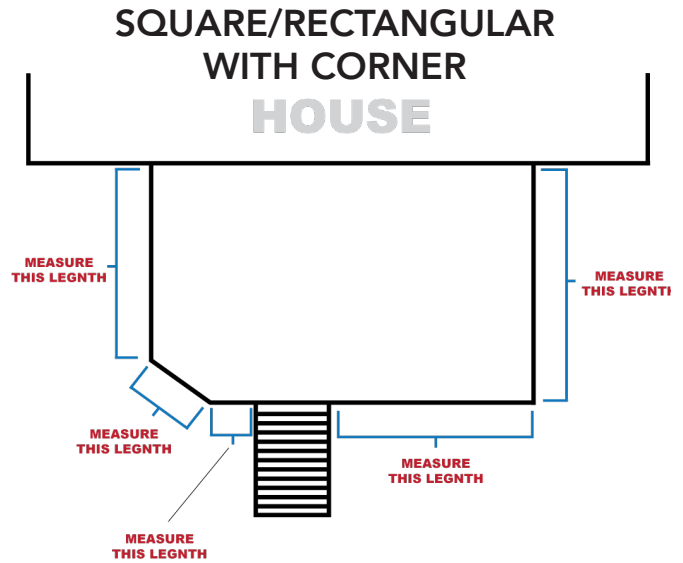
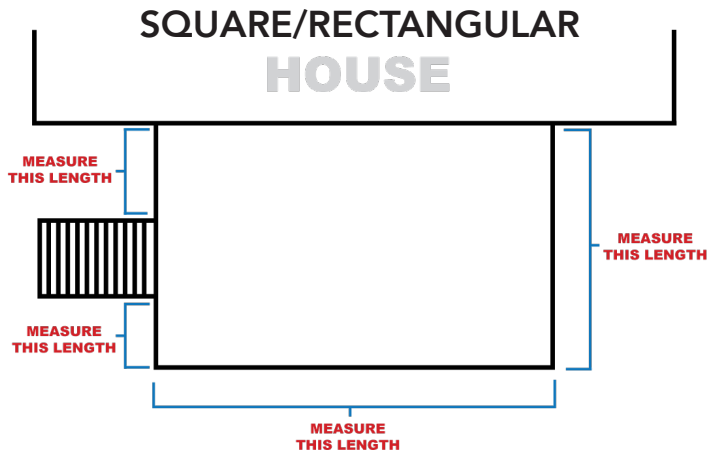
PRO TIPS:

- Use a steel measuring tape for accurate measurements.
- Measure to the nearest inch.
- To reference how to measure different deck configurations, see page 4.



COMMON DECK CONFIGURATIONS

Whether your deck's configuration has a standardized layout or is totally custom – we can estimate it. Here are a few examples of proper measurements.

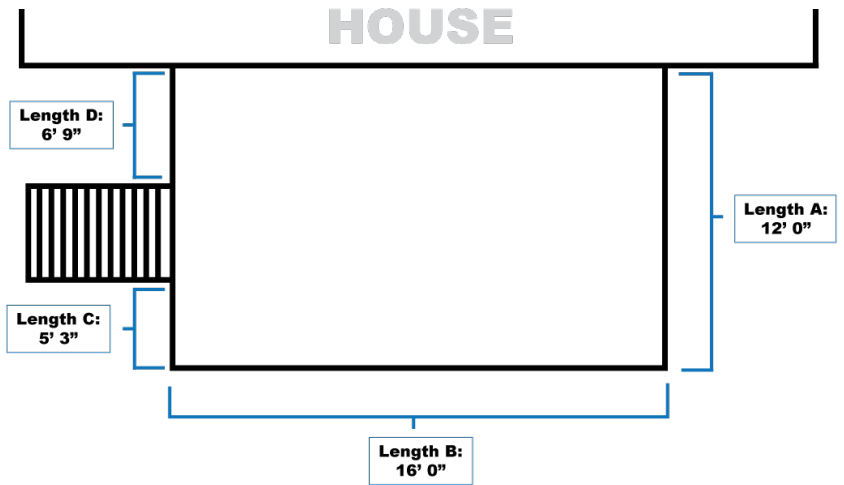


STEP 2

DRAW

Draw your deck on graph paper and make note of all measurements. Label all sides of the deck and stairs – A,B,C – and assign measurements to A,B,C, etc. (see example). More professional drawings are also welcome but please designate all measurements.

EXAMPLE OF HOW TO NOTATE YOUR MEASUREMENTS



SCALE: 1 SQUARE = _____

A large grid of graph paper is provided for drawing the deck. The grid is approximately 30 squares wide and 40 squares high.

STEP 3

SNAP AND SUBMIT

Now that you have gathered all of your deck information and created your sketch, it's time to send us your request.

First, be sure you have a copy of your sketch to submit to us! You can scan it or simply just take a picture of your drawing with your mobile device.

IMPORTANT: Please be sure your photo/document file is either in .pdf, .jpg or .png format only. Estimates will not be accepted with other file types submitted.

Once your information is gathered, submit your request by visiting:

AriaRailing.com/estimate.

Once you have submitted, lets get you ready for your installation. Be sure you have the following tools ready for your railing:

- Cordless Drill
- Level
- Steel measuring tape
- Pencil
- 6" #2 Square Drive Bit
- Miter Saw
- Bar Clamps
- 10" x 80-Tooth Nonferrous Blade
- 3/16" Drill Bit
- 3/16" Masonry Drill Bit (for concrete applications)
- 3/8" Hex Driver Bit
- Safety Glasses
- Straight cable threading tools (horizontal only)
- 90-degree cable threading tool (90-degree posts only)
- Cable release tool (horizontal only)
- Steel cable cutter (vertical only)

NOTES: _____



ARIARAILING.COM (844) 612-2742

Disclaimer: Please be advised that Aria Railing, Ultralox, AZEK, The AZEK Company and AZEK Building Products (hereinafter "AZEK") make no representations or warranties regarding the service, installation or business ethics of any installer or remodeler located on or obtained through the use of any AZEK or Aria Railing website. The installers/remodelers are not employees or agents of AZEK, and it is ultimately up to the homeowner to make an individual assessment regarding the use of any installer/remodeler. Your rights are governed by the terms of the contract you enter into with the installer/remodeler you select. AZEK makes no guarantees, representations or warranties, and disclaims any damages, regarding the outcome and quality of the job that they may perform if you elect to retain their services.